

Dwarf Pearl has gathered some attractions

DID YOU KNOW?

- That Lamperck's linden is one of the oldest trees in Slovenia? It's believed its about 500 years old, with a diameter of 1.5 m.
- that beech can grow up to 25 m high in 80 years, has a diameter of 15 m, a volume of 2700 m³ and 800 000 leaves with a total area of 1600 m²? Each hour it consumes 2.4 kg of CO₂ and 1 kg of water; and produces 1.6 kg of grape sugar and 1.7 kg of oxygen. This oxygen is sufficient for breathing of 10 people. In 80 years it processes 40 million m³ of air, and it contains 15 m³ of wood, which weights 12 tons when dried.
- that in many cultures around the world the pine represents the symbol of immortality?
- that the pine trees are not the autochthonous tree species in the Kras region? They were planted only at the end of the 19th century. Pine tree can live up to an age of 500 years. Needles fall off only after four to eight years.
- from the 6th century onward, from the wood of ordinary beech, writing tablets were made. These were connected together in bundles. This is how the first books were created. Because of these »Books«, this tree is still called Beech. Books are Beech, is it not? (In Slovenia the word »bukva« has both meanings: book and beech) In Germany, the letters are called »Buchstaben« and their name is derived from beech sticks.
- why are we knocking on the wood? In order to awaken in him a hidden, good wood spirit that protects our health and is taking care of our happiness.
- that the mysterious power of wooden horns in the form of a slingshot still finds water there where modern science remains powerless.
- that the owners of the Snake's Castle ordered construction of Thermal Spa Dobrna, which is the oldest operating thermal spa in Slovenia, since they have a tradition for more than six hundred years? In the year 1403, water was first used for medical purposes. The heart of the spa is the thermal spring, it is located in the central part of the Health Center. Water with a temperature of 35 to 36°C at the source comes from a depth of 1,200 meters and has a beneficial effect on all types of female diseases.

Route description

The learning path of Dwarf Jewel is created for generations from kindergarten to recreational retirees. The path is a form of green sustainable tourism. It connects two municipalities, the municipality of Velenje and the municipality of Dobrna. It covers many areas, from biology, history, geography, cultural and natural heritage, hiking, psychology and relaxation. On the route you will learn about the characteristics of the environment in which you are located, such as forest, water and your own essence. You may perceive a forest in a different way after taking this route. You will realize that it can also benefit you in a unique way.

WHO IS IT FOR?



Set off on a journey and enjoy!

Info:

bisercompany@gmail.com (Biser Company)

Tomaž: +386 (0) 31 318 101 (The Lampercek Homestead)



THE INSTRUCTIVE PATH OF DWARF PEARL





1. THE LAMPERČEK HOMESTEAD

THE STREAM



2.



3. VOVK MILL

IN THE FOREST

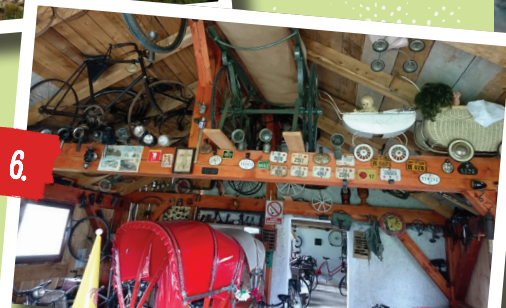


4.

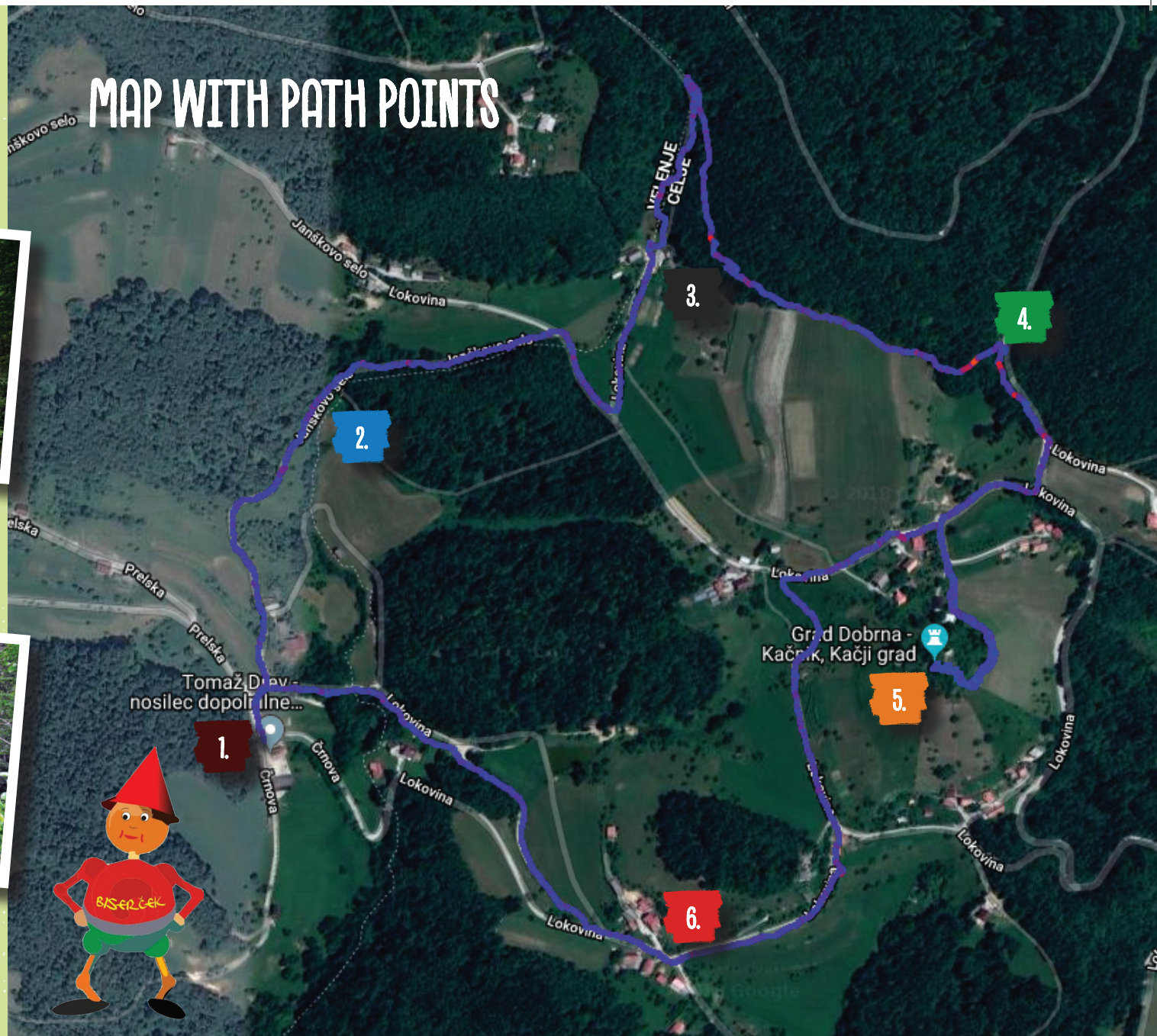


5. SNAKE CASTLE

OLD BICYCLES AND MOTORBIKES



6.



TURISTIČNO DRUŠTVO
VINSKA GORA



Biserjeva družina



Turistično Društvo Vinska Gora